



ANNUAL REPORT 2019



Introduction



As always, I feel so proud when I reflect on another year that has passed in the life of Grevy's Zebra Trust. 2019 is no exception, and again I am in awe at the dedication, hard work and passion of our team, across all disciplines.

Our rangelands team put in hundreds of hours to bring villages together around a shared vision for their desired quality of life, a critical first step in moving towards sustainable grazing management. With support from our Regional Coordinators, our teams of Grevy's Zebra Scouts, Ambassadors and Warriors walked tirelessly to monitor Grevy's zebra, collectively engaged thousands of people in conservation dialogue, and monitored the status of water and grazing resources to ensure Grevy's zebra had optimal access. Our research team streamlined our field data collection and analysis with regular training and feedback to our field teams. Our Nkirreten team produced hundreds of high quality reusable sanitary pads to change the lives of girls and women in our partner communities. Our joint infrastructure and biodiversity program with Ewaso Lions deepened our partnership with the development sector and showcased our approach and work at two international conferences. Our finance team processed the mountain of petty cash receipts that makes all of our work possible, maximized our cost-effectiveness and ensured that all of our grants were tracked and reported on.

In April, we came together as one family to celebrate the lives of heroes lost, and to set the stage for the next three years of the Grevy's Zebra Trust's strategy. When we acted out GZT's milestones in the dry riverbed in front of our camp, I noticed how proud every single team member was of where we have come from and where are going to. We are all bound by our love of Grevy's zebra and our beautiful shared vision of what the future holds. This in turn binds us to you. Everything we do is made possible thanks to our loyal friends, supporters and partners.

On behalf of the Grevy's Zebra Trust family, thank you for supporting us to step into the next phase of our mission to secure a future for Grevy's zebra.

Warmest wishes

Belinda Low Mackey
Co-Founder & Executive Director

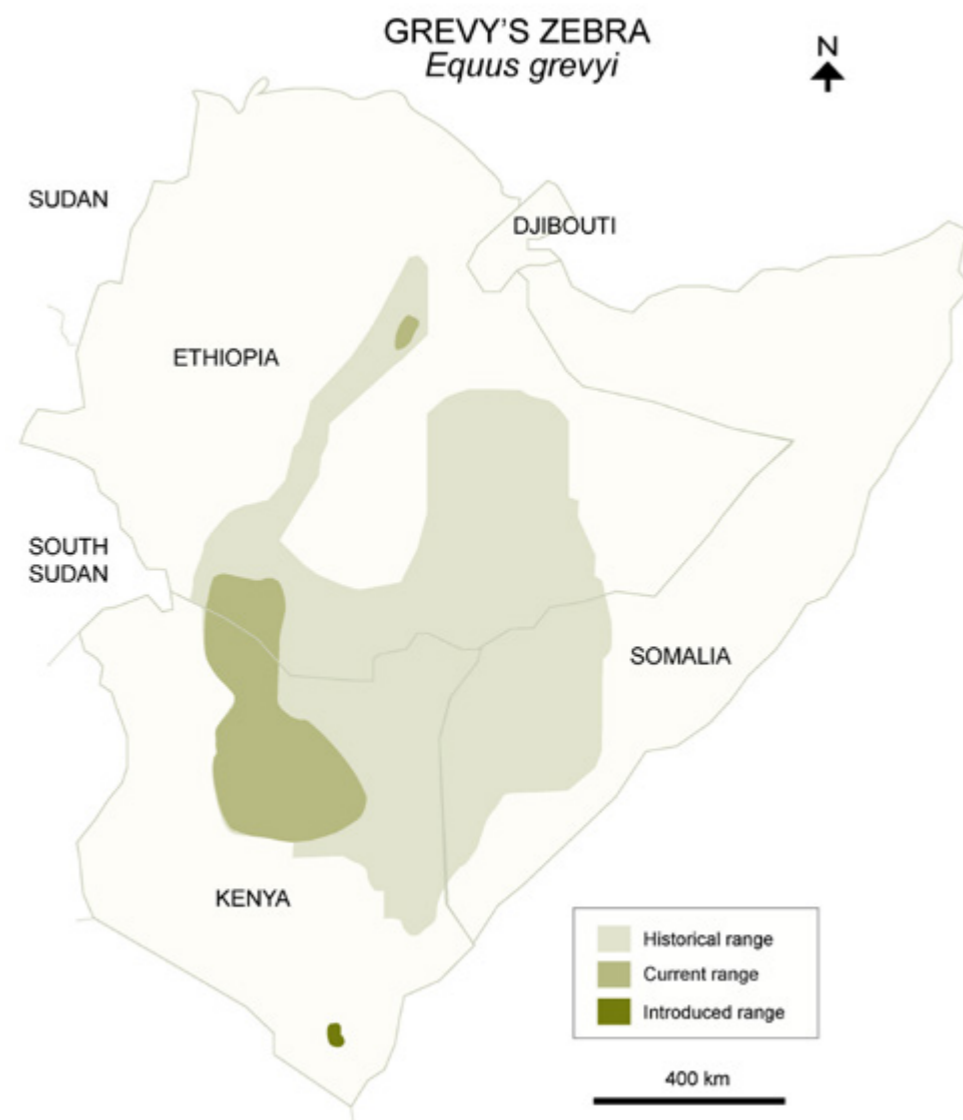
About Grevy's Zebra

The Grevy's zebra is one of Africa's most endangered large mammals.



Only 3,000 wild Grevy's zebra are left in the arid landscapes of Kenya and Ethiopia; over 90% of these are found only in northern Kenya. Once hunted for its magnificent skin, the Grevy's zebra is now threatened by habitat loss due to land degradation, limited access to water, poaching, and disease.

The Grevy's zebra is the largest zebra species in Africa. It is distinguished from the plains zebra by its large fuzzy ears, fine intricate stripes, gleaming white belly, soft brown muzzle, and a charcoal dorsal stripe bordered by a white space at the rump. Hence the Samburu name for Grevy's zebra "Loiborkurum" meaning "white-rumped".



Our Approach

The Grevy's Zebra Trust (GZT) was established in January 2007. GZT is the only organization in the world with a mission focused solely on conserving the endangered Grevy's zebra in Kenya. The Grevy's zebra's range spans a diverse landscape that comprises different cultures, ecosystems, political contexts and economic factors, all of which require GZT to tailor its work and programs to the different areas where it operates. GZT strives to strike a lasting balance between the needs of communities and those of the endangered Grevy's zebra.

OUR MISSION

To conserve and grow the Grevy's zebra population in northern Kenya.

OUR VISION

A growing Grevy's zebra population coexists with thriving, peaceful communities across healthy rangelands.

WHAT WE DO

Recognising that the survival of the Grevy's zebra depends on its ability to coexist with people living in northern Kenya, GZT believes these communities must be at the centre of designing and driving conservation efforts.



Our Strategy

GZT's efforts are centred around four main goals:



HEALTHY
RANGELANDS



GREVY'S ZEBRA
MONITORING AND
MANAGEMENT



LOW-IMPACT
INFRASTRUCTURE
DEVELOPMENT



COMMUNITY
SUPPORT

This past year we have worked to strengthen our organizational development, focusing on roles and responsibilities across the team, monitoring and evaluation to measure our impact, and fundraising.



2019 At A Glance



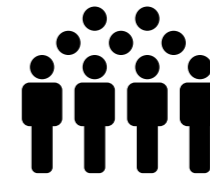
253,090

Km Driven by GZT's vehicles



24,334

Km Walked by our Grevy's Zebra
Ambassadors and Warriors



21,809

People reached through
conservation outreach



620

Hectares of degraded land
prepared for restoration



11,456

Encounters of Grevy's zebra by
our field teams



760

People engaged in community
visioning



438

Bales of hay supplementing
Grevy's zebra during drought



333

Girls receive reusable
sanitary pads



Goal: **Healthy Rangelands**

BUILDING MOMENTUM IN WESTGATE AND KALAMA COMMUNITY CONSERVANCIES

Loss of grazing habitat is the major threat to Grevy's zebra. Our focus here is to build on traditional grazing management used by pastoralists to address the root cause of land degradation. This directly improves the health of soils and plants thereby improving grazing for livestock and wildlife.

In 2019, the Rangelands team continued to focus efforts in Kalama and Westgate Community Conservancies. Grazing committee meetings helped the conservancies to identify livestock corridors, poorly placed settlements

and develop a community engagement schedule. These early preparations enabled both conservancies to successfully prepare and implement their wet season grazing plans.

We also trained 715 people on best-practice rangeland management, which resulted in the formation of clear grazing plans and impressive dry season forage reserves in both conservancies. Following this training, village teams spearheaded by women, also voluntarily cleared 620 hectares of the indigenous encroacher species *Acacia reficiens*.

The rangelands team also conducted five four-day intensive training workshops in each conservancy, training a total of 90 women, 87 elders and 26 warriors. This training had significant impact in mobilizing the wider community to support and own conservancy grazing plans.



“The approach of Grevy's Zebra Trust is very simple and practical for the pastoral community. It is what the pastoralists used to do in the past to cope with season changes. As much as climate change is a new phenomenon that the pastoralists cannot always grasp, their coping mechanism is practical and aligned to what Grevy's Zebra Trust and Westgate Community Trust are implementing. We would like to borrow this method in Amaya triangle! Please come and share with us there!”

~ a representative from Baringo county who visited the holistically managed site in Westgate Conservancy.

COMMUNITY VISIONING

Peter and Andy from our Rangelands Team were trained in Holistic Land and Livestock Management (HLLM) at the Africa Centre for Holistic Management in Zimbabwe in October. Following the training, we undertook a new process – community visioning – with 13 village zones in Westgate and Kalama conservancies, engaging 760 community members. Precious Phiri, an experienced and expert HLLM facilitator, kick-started this intense process with five community groups and Peter and Andy then completed the remaining eight workshops.

This visioning process is extremely valuable, not only in exploring the causes and effects of rangeland degradation with the communities, but in supporting them to envisage and design the path they can follow to a healthier and more productive environment. Each community developed their action plan to take forward their vision towards a healthy resource base that can support their desired quality of life far into the future.

Community visioning is the first and foundational step in GZT's theory of change for healthy rangelands.



Lempaute Community's Vision

THE PROBLEM

Bare, Degraded Land

Healthy, Abundant Land

THE VISION

CAUSES

OVERGRAZING
AND UNPLANNED
SETTLEMENT



Charcoal burning,
poaching

Food insecurity, poverty, unhealthy people,
livestock deaths, conflict

COMMUNITY
DISUNITY



LOSS OF
TRADITIONAL
KNOWLEDGE

Lack of pasture,
water shortages

Cultural erosion, loss of respect
between the generations



Diverse, healthy and
protected ecosystem

Economic stability, healthy livestock, healthy
people, food security, peaceful communities



Abundant pasture
and water

Cultural stability
and mutual respect

PLANNED GRAZING
AND SETTLEMENT
PATTERNS

COMMUNITY
COHESION

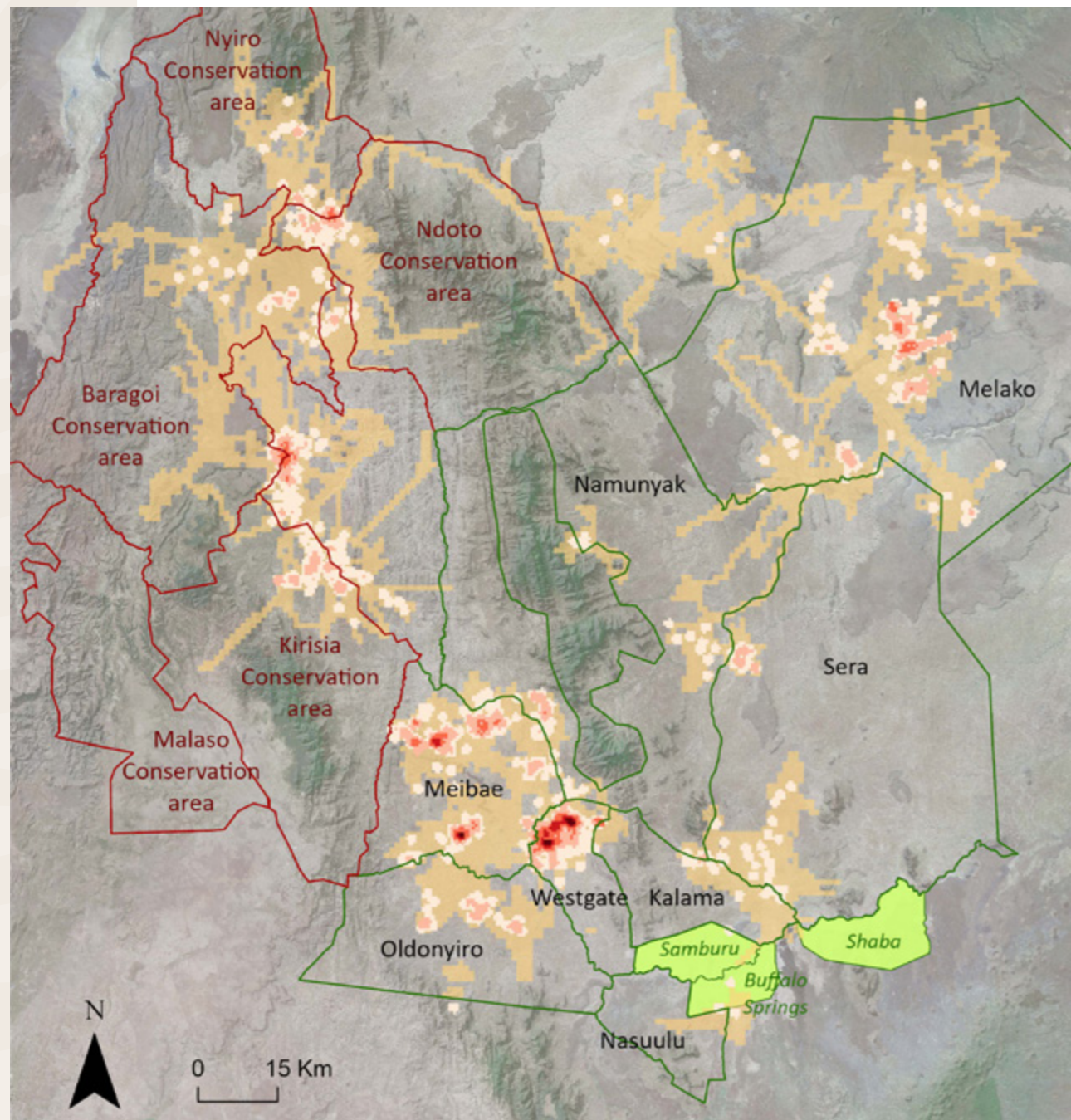
KNOWLEDGE
SHARING AND
INTEGRATION

SOLUTIONS



Goal: Grevy's Zebra Management and Monitoring

MONITORING BY GREVY'S ZEBRA SCOUTS, AMBASSADORS AND WARRIORS



Patrol area
 County Conservancy
 NRT Conservancy
 National Reserve

Grevy's zebra encounters (herds or individuals) and the area covered by patrols during Grevy's Zebra Ambassador, Scout and Warrior patrols in 2019

Grevy's Zebra Encounter Density Low → High

Our Grevy's Zebra Scout, Ambassador and Warrior teams monitored Grevy's zebra throughout 2019 across our three operating regions.

WAMBA

(Grevy's Zebra Scouts)

Grevy's zebra moved across the landscape in response to localized rain and the highest numbers of Grevy's zebra were seen after the long rains (March-May) in the west of the region and after the short rains (Oct-Dec) in the east of the region. Westgate Conservancy continues to be a stronghold for Grevy's zebra.

EL BARTA

(Grevy's Zebra Ambassadors)

Many of the migrating pastoralists from Laisamis moved into El Barta and our Grevy's Zebra Ambassadors reported Grevy's zebra being displaced to new areas where they are not normally seen because of the huge influx of cattle. However, good pasture in El Barta supported large herds of Grevy's zebra throughout the year.

LAISAMIS

(Grevy's Zebra Warriors)

Unlike the rest of the country, Laisamis experienced a drought which lasted until the rains in October. As a result Grevy's zebra were found in smaller numbers and more dispersed. Many herders and their livestock moved out of Laisamis in search of pasture and water. Grevy's zebra moved to the plateaus where grass is available but there is limited water and our Grevy's Zebra Warriors spent just under half their time during the year carrying out dry season patrols in the plateaus.



Overall Population Health

Across all our regions, Grevy's zebra populations were healthy with foals and juveniles making up close to, or over, 30% of the population. We have started tracking individuals using their stripe patterns in Laisamis, which will give us a better understanding of the impact of the drought on foal mortality, as well as the impact of our supplementary feeding intervention which was designed to reduce the distance Grevy's zebra, particularly lactating females and foals, had to travel between water and food. In El Barta and Laisamis, male to female ratios were 1:2 which indicate these populations have the capacity for growth.

Metric	SCOUTS		AMBASSADORS		WARRIORS	
	2018	2019	2018	2019	2018	2019
Grevy's Zebra Encounters (Herds or Individual)	1,240	1,379	498	424	192	258
Grevy's Zebra Seen (Total Number)	8,762	7,897	2,534	2,575	1,499	984
Average Herd Size	7	6	5	6	8	4
Largest Herd Size	73	92	59	121	87	16
Foal-Juvenile Combined Total %	24	29	27	28	14	34
Sex Ratio (M:F)	1:1	1:1	1:2	1:2	1:1	1:2



©Andrew Peacock

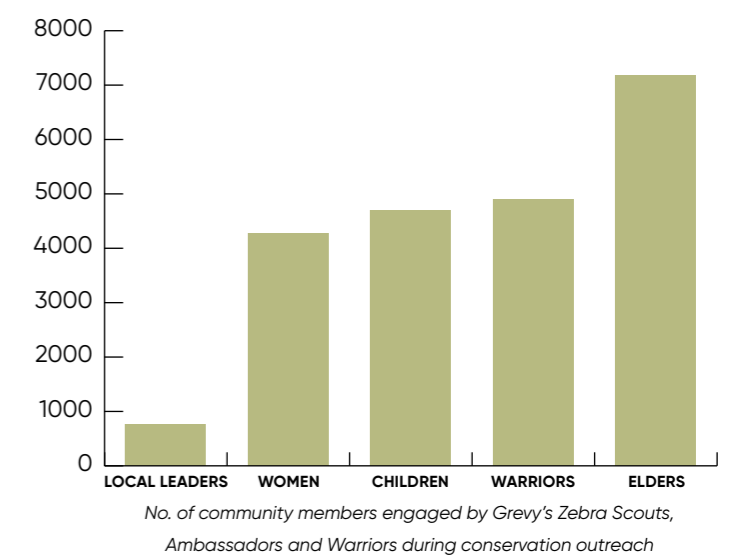


©Andrew Peacock

CONSERVATION OUTREACH

More than 21,800 people were reached through 350 meetings held by the Grevy's Zebra Scouts, Ambassadors and Warriors during 2019. Of these meetings, 75 were with herders who were out herding their livestock.

Engagement covered a range of topics, including exchanging information on Grevy's zebra, discussions on grazing plans, resolving issues of human-wildlife conflict, peace and security, rangeland restoration, location of settlements, and water status, availability and access.



SUPPLEMENTARY FEEDING IN LAISAMIS

Since 2011, supplementary feeding with hay has been used in drought situations to alleviate the impact of droughts on Grevy's zebra.

Supplementing the natural diet of Grevy's zebra with hay helps to prevent starvation and allows them to maintain body condition so that they can better withstand the effects of drought and disease.

In 2019, Laisamis experienced a severe and prolonged drought because of the failure of the short rains in 2018 (October to December) and long rains in 2019 (March to May). Our Grevy's Zebra Warriors were constantly monitoring the condition of the Grevy's zebra and the availability of grazing and water resources, which was rapidly declining. Thanks to their vigilance, and with the approval of the national Grevy's Zebra Technical Committee, we started a supplementary feeding effort in July.

We established two feeding sites in corridors used by Grevy's zebra to move between water and grazing areas in Tirgamo and Lchorro, while a third site was set up in September in Sakardala. We monitored these sites with camera traps, which showed that hay uptake was high and that lactating females and their foals made significant use of the hay, until the rains arrived in October. A total of 438 hay bales were used by the Grevy's zebra.



OUR GREVY'S ZEBRA WARRIOR TEAM IS HONOURED WITH A 2019 DISNEY CONSERVATION HERO AWARD

GZT nominated our Grevy's Zebra Warrior team for the Disney Conservation Hero award because of their incredible dedication over the last seven years, trekking through extreme heat on remote lava plateaus, and in the course of their work getting bitten by puff adders, stung by scorpions and eaten by ticks. Their excitement when they see Grevy's zebra is palpable and they go to great lengths to document everything they encounter, including reptiles, birds, people and landscapes. We believe they are all heroes and therefore highly deserving of the award as a collective team.

"I think the warriors will agree with me that this award is something we truly deserve. We receive it with great thanks and appreciate our management team for exposing what we do because without them, it's hard for the world to know what we do."

~ Harugurah Lbarichoi, Grevy's Zebra Warrior Team Leader.





Goal: **Low-Impact Infrastructure Development**

INFRASTRUCTURE AND BIODIVERSITY PROGRAM

One of the greatest threats facing Grevy's zebra and other wildlife in the landscape is both small and large-scale infrastructure development projects. Our joint Infrastructure and Biodiversity Program with Ewaso Lions, aims to mainstream biodiversity into infrastructure planning and design. Highlights from 2019 show just what is possible through constructive, trust-based engagement and collaboration.



"The Grevy's Zebra Trust and Ewaso Lions are doing an amazing job! I have particularly benefited from numerous conversations with the team that have simplified my understanding of ecological connectivity aspects. I feel empowered to stimulate discussions geared towards developing low impact linear infrastructure."

~ Edith Kahubire, Principal Social Development Officer, African Development Bank

Through multi-stakeholder collaboration, design advice for the proposed Isiolo-Lokichar Highway to secure critical crossing points for wildlife was submitted to the Kenya Highways Authority. We also gave input to Isiolo's Urban Economic Plan, the Ewaso Ng'iro North Development Authority FY2020-2023 plan and a new road development proposal. Our team was also instrumental in supporting field visits by infrastructure developers.

The Kenya-Ethiopia A2 Highway 'Wildlife Watch Project' was launched in 2019 with our partners in the landscape. The goal is to provide roadkill data to inform retrofitting of this highway to secure the safety of road users, wildlife and domestic animals.

Sarah Chiles, our shared Landscape Infrastructure Advisor with Ewaso Lions, presented on the Infrastructure and Biodiversity Programme at two international conferences: the African Conference for Linear Infrastructure and Ecology, in South Africa, which she attended with four colleagues from Kenyan infrastructure agencies; and the International Conference on Ecology and Transportation in the US, which she attended with a colleague from the Kenya Wildlife Service sponsored by our programme.



Goal: **Community Support**

NKIRRETEEN (REUSABLE SANITARY PAD) PROJECT

GZT's Nkirreten project now employs four Samburu women on a semi-permanent basis at our camp in Westgate. During 2019, reusable sanitary pads were distributed to 333 girls from 11 schools in the Wamba region. Each girl received one bag containing four pads, with training on how to use and maintain the pads hygienically.

In addition, 100 community women who voluntarily engaged in clearing of invasive *Acacia reficiens* in Westgate Conservancy also received the pads.

We believe that by investing in improving this aspect of life for women and girls, we strengthen their intrinsic connection to Grevy's zebra. To better understand this, Damaris, who heads the Nkirreten Project for GZT, designed a survey with technical support from the research team and The Living Desert Zoo and Gardens, to assess the impact of the project on community behavior, attitudes and perceptions towards Grevy's zebra. The survey results will be available in 2020.

"I am in standard eight and I hope to get a good mark during the national exam because I have never missed school again since Grevy's Zebra Trust provided me with a pack of Nkirreten reusable pads. I love the pads because they are easy to wash, comfortable and beautiful like Grevy's zebras"

~ Naserian Leparmarai, Ngutuk Elmuget Primary School.



Grevy's Zebra Scholarships: **Mercy's Story**

Mercy Neepe was among the five lucky girls awarded a four-year Grevy's Zebra Scholarship in 2017. She comes from a family of six who live in a village called Karare in Marsabit County, where most girls are married off after primary education.

Mercy had a dream to become a pilot. However, this seemed impossible as her family's financial capability was limited, with only a few goats in their possession. This all changed when Mercy was selected by her school and community to receive one of our scholarships.

Full of hope and determination, Mercy joined one of the best private secondary schools in Northern Kenya, and has demonstrated dedication in her studies, achieving good grades especially in the Sciences.

Mercy feels that apart from receiving the scholarship, being part of the GZT family has been a very important time in her life. "I have learnt so much from you: the motivational talks have changed me into who I am today, the care and love you have always shown me, and most importantly your attitude of being ready to give me a shoulder to lean on."

She continued, "Since I have learnt a lot from you about conservation, I will take the same knowledge to my community and make them aware of this rare animal so that they take care of it. I will also tell them to take care of the environment, and most of all, I will give them my support so that more young girls like me have an opportunity to join the GZT family."

We are excited for the day that Mercy takes to the skies, and shows girls in her community that dreams can come true through determination and hard work.

Collaboration and Partnerships

SCOUT TRAINING WITH THE ETHIOPIAN WILDLIFE CONSERVATION AUTHORITY

In December, Julius and Annsarah led a two-day Grevy's Zebra and African Wild Ass Scout Training Workshop in Awash, Ethiopia, at the request of the Ethiopian Wildlife Conservation Authority (EWCA). Ethiopia's Grevy's zebra population is approximately 230 individuals, found mostly in the Alledeghi Plains in the north east of the country. Conversely, the African wild ass, found only in Ethiopia, Somalia and Eritrea, has seen a 96% decline in numbers since the 1970s and is listed as Critically Endangered. The challenges facing these two species are similar to those facing the Grevy's zebra in Kenya: drought, habitat loss and fragmentation, and poaching. The aim of the workshop was to train both the EWCA and local community scouts to effectively monitor Grevy's zebra and wild ass, and to train a Data Manager and Data Analyst to manage the dataset and produce accurate outputs. Building the capacity of the community scouts should lead to better data collection and updated and reliable estimates for these two endangered species.





GZT AT THE INTERNATIONAL WILD EQUID CONFERENCE

Sheila Funnell, our Research Manager, represented GZT at the International Wild Equid Conference, which brought together equid specialists from all over the world to share their research findings and the technology and tools used in successful conservation, and to provide opportunities for networking and international collaboration. Sheila illustrated how our Grevy's Zebra Warrior Program has generated valuable insights into Grevy's zebra conservation at local and national scales, and how the program champions conservation through positive behavioural changes by local communities. The feedback was very positive and encouraged other researchers to harness the skills of local communities to conserve endangered equids.



A Celebration of Life

Honouring Rikapo Lentiwoo, Nolmekiji Leletur, Ntaipore Leparlero and Pauline Lenene

To honour the lives of the conservation heroes that we lost in 2013 and 2018, more than 100 members of the Grevy's Zebra Trust family gathered at our camp in Westgate Community Conservancy to celebrate these amazing people and reflect on what they contributed to Grevy's zebra conservation and to our own lives. It was a day of tears, laughter, friendship and healing.

AFRICAN CONSERVATION LEADERSHIP NETWORK

We were excited to be selected as one of the organisations to join the African Conservation Leadership Network (ACLN) in 2019! ACLN is a collaboration of Maliasili and The Nature Conservancy who invest in African conservation leaders to grow and work together, thereby achieving greater conservation impact across Africa. Julius and Belinda travelled to Zambia in October 2019 to meet with our fellow cohort members and undergo leadership training together. In our cohort we were privileged to be with organisations from southern Africa, including Mozambique, Namibia and Zambia.



The Grevy's Zebra Ambassadors saluted the fallen heroes through a parade; Mama Grevy and Chereb Lechoriong shared memories of each hero; a memorial bench for Rikapo that sits atop a rock kopje overlooking the dry river bed, was revealed and blessed by the elders; and a memorial stone to commemorate our colleagues was presented. In the evening, we danced and sang in celebration of these beautiful lives.





Looking Forward

The celebration of life brought us even closer as a family, and set the tone for the following two days during which we internally launched GZT's strategic plan. We acted out the milestones in GZT's history, discussed our core values, danced and sang our vision in three different cultures, explored our four strategic goals and role-played our theory of change – the ultimate impact we expect to achieve, which is to conserve and grow Grevy's zebra numbers in Kenya.

Ashe Oleng!

Join us in ensuring a vibrant future for Grevy's zebra and the communities they share the land with. Your financial contribution to our work goes directly towards supporting our passionate team committed to improving conservation outcomes in northern Kenya. Together, we can make this vision a reality. We are profoundly grateful for your generosity – thank you!



Our Team

Founders

Belinda Low Mackey
Martha Fischer
James Munyugi

Board

Tom Lalampaa
Dr. Francis Gakuya
Martha Fischer
Dr. Juliet King
Sara Spendrup Dyer
Peter Leshakwet
Dr. Guy Parker
Shaban Mwazondo
Kasmira Cockerill

Senior Leadership Team

Belinda Low Mackey, *Executive Director*
Peter Lalampaa, *Rangelands Manager*
Sheila Funnell, *Research Manager*
Lilian Seko, *Finance & HR Manager*
Julius Lekenit, *Governance & Partnerships Manager*

Regional Coordinators

Andrew Letura, *Wamba*
Joel Loong'onyo, *El Barta*
Joshua Labarakwe, *Laisamis*
Lino Lemuramba, *Driver*

Research Team

Sheila Funnell, *Research Manager*
Annsarah Wangui, *Research Officer*
Tony O'chieng, *Research Intern*
Dr. Justine Cordingley, *Technical Advisor*

Rangelands Team

Peter Lalampaa, *Rangelands Manager*
Andrew Lekisanyal, *Rangelands Officer*
Titus Leguuto, *Driver*

Infrastructure & Biodiversity Program

Sarah Chiles, *Landscape Infrastructure Advisor*
Julius Lekenit, *Governance & Partnerships Manager*

Finance Team

Lilian Seko, *Finance & HR Manager*
Janet Minai, *Accounts Assistant*
Lisette Gelber, *Financial Consultant*

Grevy's Zebra Trust Camp Team

David Muriira, *Camp Manager*
Eric Lekiluai, *Cook*
Anitah Lengila, *Housekeeper*
Lparasian Lalampaa, *Day Guard*
Yamas Letoiye, *Night Guard*
Stephen Learamu, *Night Guard*
Henry Lolosoli, *Driver*

Nkirreten Team

Damaris Lekiluai, *Women's Empowerment Officer*
Sintwan Lekilia
Namutie Lekarkaraule
Santarua Lekinaet
Masia Lelikoo

Grevy's Zebra Scouts

Ngeeti Lembate
Paton Lekalkuli
Naatimu Leletur
Irene Lemumoisa
Chereb Lechoriong
Rosemary Lentaam
Jumaani Leparleru
Noisurai Lentawo
Paatin Lebacha
Josephine Lekulal
Salacho Lenwalbene
Margaret Lekirsisae
Johana Lelepdaso
Saruni Lesanjir
Loriente Lengyangume
Loburini Lemagas
Ntapuli Lematacho
Miriam Lemoyong
Lteresian Loibotong
Reitain Leisoro
Simon Lekaramagar
Silango Lengima
Ririan Lesachore
Ntimoris Leapore
Helena Leperesian
Christina Leririe
Jamarose Moru
John Abura
Kangware Lekwanja

Grevy's Zebra Ambassadors

Mulamba Lentamelei
Patla Lolgemy
Alois Lempasie
Micho Nakadon
Loidangae Lewarani

James Leajore
Oputhikie Leajore
Loburuk Namulen
Lmantros Lenengetai
Petro Leshoe
Santiri Lelegwe
Lirias Leatiya
Lpakasin Lolwerukoi
Moses Lenaigerumorua
Leterian Leisogono
Ltpalira Lengees
Kawanga Lesaana
Ekai Loyee
Radio Operators
Mary Lobuk
Boniface Leshaule

Radio Base Guards

Stephen Loseny
Juma Lobuk

Elbarta Conservation Council

Tekoi Lechoe
Moses Lengees
Ekunam Lotuntu
Esokon Engolan
Ltangasian Lekuntet
Lepois Letelepa
Caeser Lerengen
Toika Lenanyokie
Lekaato Lempoore
Loiboku Leaduma
Nkanyuran Lelengeju
Lejaman Lempasiag
Lesampure Lengiriai
Rajab Leremore
Erim Lelesit

Kirisia Lekaraato
Kalgesa Leswakeri
Ltirisi Lelengeju
Lekarangwa Thomas
Kawath Lopongoi
Eleto Eshoto
Elimlim Ekoe
Mbaliya Lentoimaga
Antonia Lesiamito
Mpilanoi Lesirite
Teresia Lopidongole
Rehema Lepatoye
Graziella Letipila
Juliata Lemacharia
Simami Lepakiyo
Muthee Muruan
Nakuye Lokia
Achuka Lorawakala

Grevy's Zebra Warriors

Ibaricho Harugurah
Loipido Learapo
Petro Loitome
Lmantheisan Lomongoi
Lpilian Loronyokwe
Lmeidimi Khalawkhale
Dominic Leparnat
Ltipanoi Lemarleni
Aliyan Ilkul
Lperia Lekureya

Camera Trap & Water Monitors


Pino Lenguyo
Jona Leyan
Naliapa Lesimatacho



www.grevyszebratrust.org

 www.facebook.com/grevyszebratrust/

 www.instagram.com/grevyszebratrust/

 www.youtube.com/channel/grevyszebratrust/

